

2111 RACE SPECIFICATIONS



Sustainability Profile:

- USGBC Registered, anticipated LEED Gold
- HERS Rating: 28
- Estimated Annual Utility Cost: \$950
- Estimated Annual Utility Savings: \$2,500
- If applied to mortgage: \$175,000 interest savings @ 4.75%
- Accelerated Payoff @ 23 yrs vs. 30 yrs
- 6 kw LG Solar Arrays
- Smart Home Automation

Basic Specifications:

- 5 Bedrooms -
- 3.5 Bathrooms -
- Custom Copat Italian Kitchen -
- 2 Car Detached Garage -
- Roof Top Deck -
- 3,000 Sq Ft. -

Marketed By
ProDan Realty



PRODAN

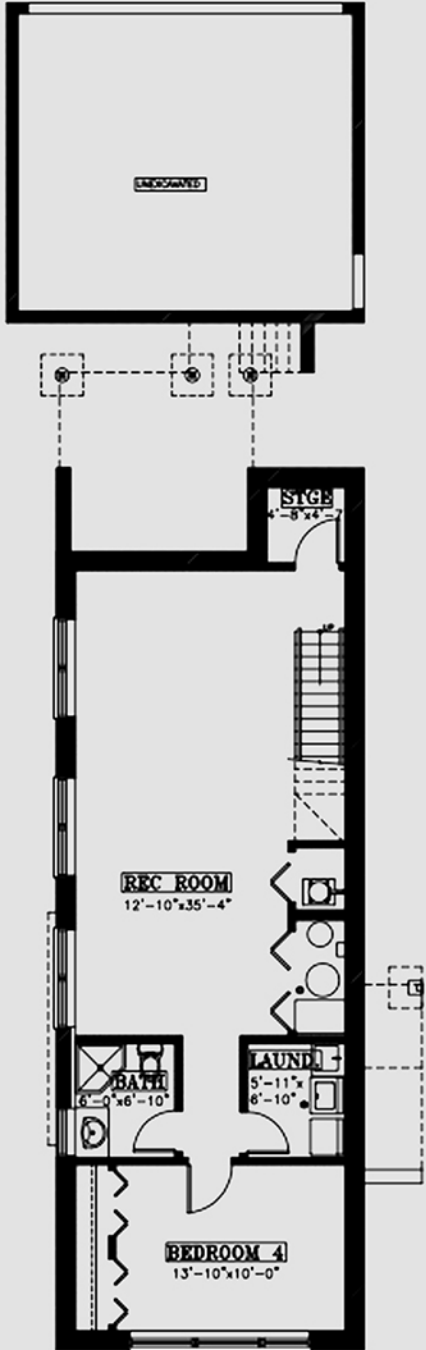
PANOPTIC GROUP

Property Spec Sheet

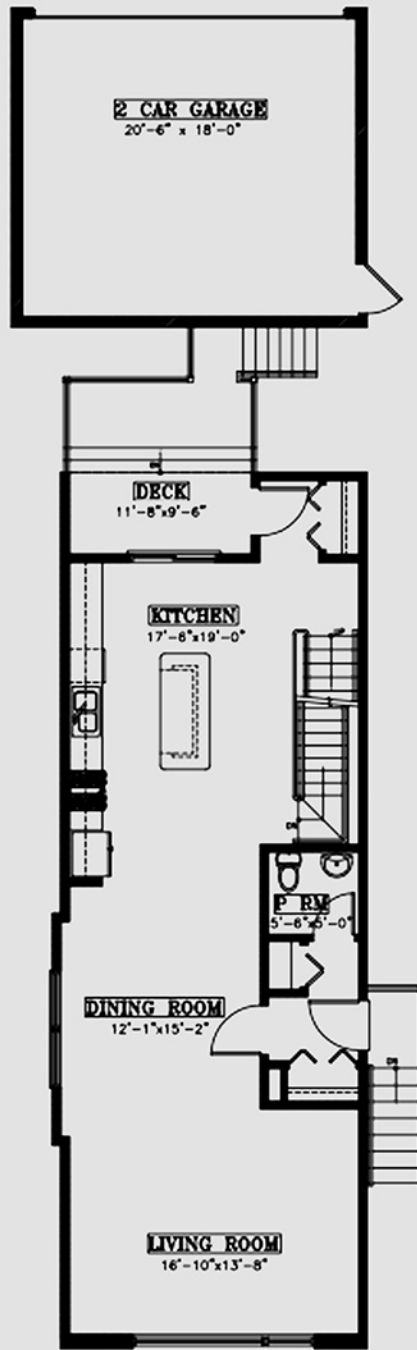
West Race St., Chicago Illinois

FLOOR PLANS

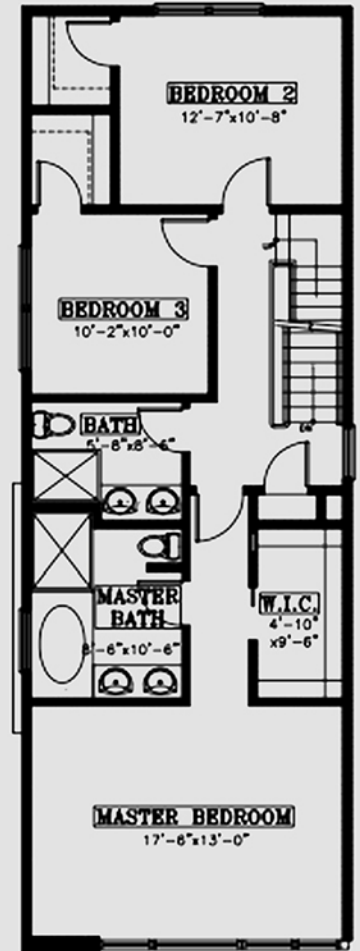
BASEMENT



FIRST FLOOR



SECOND FLOOR



The Difference: *Insulation*

A major different in the way we construct our homes reside in the sealed-shell structure, or more specifically, the insulation. We use multiple types of insulation to not only ensure that home has an efficient and airtight envelope, but is also comfortable and quiet to live in. To accomplish this we use 5" open cell and 2" closed cell foam in the shell of the home. As a way to reduce noise throughout the home, we install quiet zone insulation and a combination of 3" open cell foam for airborne noise and 6" blow cellulose for vibration sound. [Are homes are quieter, more comfortable, and better sealed.](#)

Sealed-Shell /01

The sealed-shell structure starts with the foundation. We insulate the foundations of all our homes with a continuous rigid 2" foam insulation to create a thermal break and insulate the homes concrete from the cold earth below.

Additionally, we use closed-cell foam in the basement and open-cell foam insulation on the upper floors, creating a home that's almost 3 times more air-tight than a standard new home.

Insulated Floors /02

Comfort level and noise control are extremely important to us. Most city homes have the sleeping area directly above the living area. Those going to sleep should not have to listen to the noise from the rest of the house. This is the reason we install multiple layers of spray foam between floors to ensure that sound and vibration doesn't resonate between any of the floors.

Sound Deadening /03

Lastly, we take our time on all of our interior wall insulation to ensure the highest quality possible. As a standard, we insulate the walls of the bathrooms, bedrooms, and closets with sound-deadening insulation. The home should be quiet not only vertically, but also horizontally. The result is the quiet and comfort you would expect in a high-performance home.



The Difference: HVAC

Another major difference in our homes are the HVAC systems, which are not only more efficient, but also provide much cleaner air quality and consistency throughout the home. All of our HVAC systems use ERV's, or air to air exchangers. ERV's pre-condition outside air, improving indoor air quality and reduce the load on the HVAC. We also custom-engineer every HVAC system specifically to the home, ensuring adequate sized ducts and optimizing consistent air flow in every space. UV bacterial filtration lamps add additional air purification and are ideal for families with small children to provide cleaner air. *Simply put, our systems are half the size, double the efficiency, and twice the savings.*

Custom Engineering /01

With every HVAC system, we create an energy model, taking into consideration the building envelope, floor plan, and air flow requirements, to determine the accurate size furnace needed for optimal efficiency. Not only is it important to have the right furnace, but to have the appropriate ductwork. We create a custom ductwork layout to ensure appropriate airflow in all parts of the home.

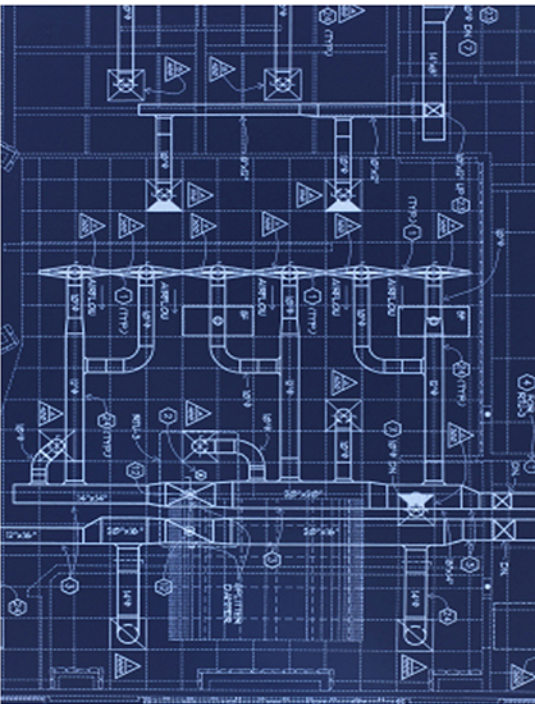
Testing Process /02

Testing is another important aspect of our custom HVAC system. Before the walls go up, we run the system and perform a pressure test. After construction is complete, we do final testing where we test the system with a flow meter and adjust the dampers to ensure consistent and even airflow throughout the entire home.

Hardware /03

By using medical-grade air filtration and UV bacterial filtration, we can create a anti-allergen, bacteria-free living environment.

We also install ERV systems, also known as air to air exchangers, in our homes. These systems extract the heat, pre-condition air from the outdoors and reduce the need for the HVAC to run.



The Difference: *Smart Home Automation*

Smart Home Automation functions as the brain of your home. It's a system that integrates every controllable aspect of the home together so you can monitor and control your home from any mobile device. Everything from the lights to energy consumption can be monitored, automated, and controlled, making sure your home is functioning to the highest performance possible. With countless upgrade options, these systems can be completely customized to fit the needs of any home owner. *Smart home automation will revolutionize your living experience and further reduce energy consumption.*

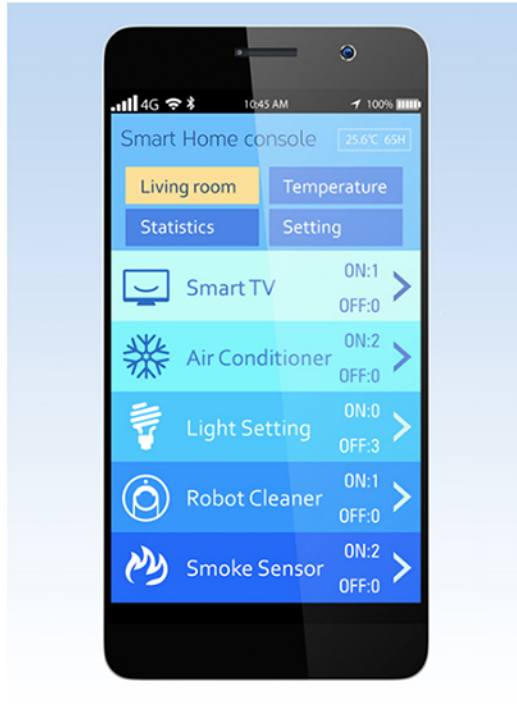
Pre-wired Standard /01

Wiring is one of the hardest things to change when the home is complete. We provide a comprehensive pre-wire package that would address any current and future needs the homeowner might have in regards to automation. This includes HD video, , audio, and high speed internet in all rooms. Additionally, we pre-wire speakers for every room in the home, using 7.1 audio for the media rooms.



Robust Functionality /02

Once installed, the smart home automation is capable of controlling lights, HVAC, security, cameras, doors locks, and energy monitoring from any mobile device, anywhere with an internet connection in the world.



Customizable Systems /03

Smart Home Automation can be customized to the needs of the home owner easily. Upgrades such as occupancy sensors will automatically shut off lights when people are not present, reducing energy consumption.

Customized programming is another great feature of these systems. They can be programmed to automatically shut down the house when you leave for work, and turned on again when you return.



The Difference: *Energy Production*

The efficiency of a building envelope and mechanical systems are extremely important, but there's only one way to make your meter spin backwards and achieve NetZero - energy production. All of our homes include 6kw solar arrays on the roof which can contribute up to \$200 a month in additional energy savings. In many cases, when solar is coupled with smart home automation, a sealed-shell structure, and high-efficiency HVAC systems, the result is a home that can generate as much energy as it consumes.

Solar Array /01

Every home is fitted with a 6kw solar array on the roof. These arrays tie into the grid directly and generate energy which offsets the utility bill for the home.

Solar Thermal /02

Our homes offer optional solar thermal systems. Solar thermal units are glass water pipes fitted on the roof that allows the sun to heat water from the home during the day, reducing the load on the water heater.

Electric Car Wiring /03

The garage includes pre-wiring for an electric car charging station that ties in directly to the solar panels. This allows for free charging of electric cars from the sun, and eliminates the energy costs associated with powering an electric vehicle. Simply put, you can charge your car from the power generated from your home.





PANOPTIC

GROUP

Exterior Elements

With every home we build, we try to incorporate the highest quality materials that couple functionality with design. The exterior of a home is the first impression, so we make sure to incorporate this philosophy in every project we take on. We make sure all of our materials contribute to the performance of the home and contribute to the reduction of energy consumption. It's why we add important details like pre-wiring for electric car charging stations in every garage, or using high quality windows and doors. When these elements are combined, the end result is a truly unique home.



Scan For More Information

HOME FACADE /01

The front elevation of the home is a combination of brick veneer and glass with the sides and rear of home finished with 4ft x 8ft Hardie Board Panels.



STAIRS & FENCE /02

The front entry stairs are made of a metal frame with concrete steps. The rear stairs and garage rooftop stairs are made of pressured lumber.



ROOF & DECK /03

The roof is made of a Bitumen flat rubber, finished in a reflective coating to resist heat from the sun. The rear deck and garage deck floor are both finished in a pressure treated lumber.



GARAGE /04

The home features a two-car garage with overhead remote controlled door. The garage is pre-wired for an electric car charging station and will feature 4ft x 8ft Hardie board panels on the facade.



WINDOWS & DOORS /05

The windows are aluminum wrapped, energy star rated, wood-frame white windows. Main and rear doors are metal with glass inserts by Pella windows. All hardware is polished chrome.





PANOPTIC GROUP

Interior Elements

The properties of the interior elements of our homes go a long way in providing comfort and efficiency. From the spray foam insulation, to sound deadening between floors, and even the type of paint we use, we can improve the efficiency and living quality for the homeowner. We incorporate both closed cell and open cell insulation in the walls, which greatly improve the insulating properties. The average blower test rating in our homes is 1.75 ACH, which is almost 3 times lower than the new building standard of 5. This means less air enters or leaves the home, improving efficiency.



Scan For More Information

INSULATION /01

Our homes are 50% more efficient than a structure built to code. A big reason for this is the insulation we use.

Exterior Insulation

Above grade: 5" open cell spray foam
Below grade: 2" closed cell spray foam

Roof

8" open cell spray foam



SOUND DEADENING /02

Between the floors on our home, we use 3" of open and 6" of closed cell spray foam insulation to prevent sound from the adjacent floors. We also fiberglass sound batt the perimeter of all bathroom walls.



DRYWALL /03

The exterior drywall is 5/8" gypsum boards. On the interior, we use 1/2" gypsum boards.

The bathrooms use a combination of 1/2" cement boards and 1/2" waterproof gypsum boards.



PAINT /04

We use low VOC paint on all the surfaces of our homes. This provides cleaner air in the home, and contributes to our LEED certification by giving additional LEED points.





PANOPTIC

GROUP

Kitchen Finishes

The kitchen is the most used space in any home, so we always set out to make it beautiful. We incorporate the finest materials and finishes, including custom Copat Italian Cabinets, quartz stone countertops, and natural oak floors. The result is a gorgeous space that can be customized to fit the styles of any homeowner.

Besides our standard package, we also include multiple upgrade packages for the kitchen which include lighting fixtures, trim, faucets, and more.



Scan For More Information

ITALIAN CABINETS /01

Our homes feature custom Copat Italian cabinets with UNI EN ISO 9001 quality system certification and UNI ES ISO 14001 ecological management certification.



CABINET COLORS /02

The cabinets and pantry are finished in Copat's Natura color, while the base cabinets are finished in Copat's Carbone color as standard.



COUNTERTOPS /03

The kitchen countertops are made of a beautiful 1 1/4" quartz stone, giving a clean and natural finish to the space. For the back splash tile, we use a Luna ceramic tile.



OAK FLOORING /04

The kitchen flooring is done in a 3 1/4" oak with a Jacobean finish, laid straight.



KITCHEN SINK /05

The sink is a large, 30" square, 16 gauge under mount, stainless steel sink by Megabai.





PANOPTIC

GROUP

Standard Appliances

The kitchen is one of the most used spaces in a home. It's important for this space to function as well as it looks, which is why we include Viking appliances as a standard on our homes. Viking is known for having a high quality product, but what a lot of people don't know is that most of their lines are ENERGY STAR rated, and have a much lower energy requirement than most other appliances. It's a win-win situation of our homeowners. You get the highest-quality appliances that actually contribute to the efficiency of your home and give you LEED points.

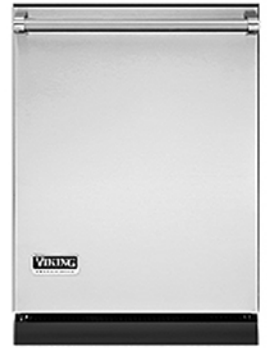


Scan For More Information

VIKING DISHWASHER /01

VDW100

100 Series dishwashers provide spotless dishes with three wash arms and a triple filtration system. A turbidity sensor monitors soil level of dishes in each load. Quiet Clean™ insulation ensures near-silent operation. Adjustable racks with stemware cradles accommodate up to 12 place settings. FDW101WS also features built-in water softener. ENERGY STAR® qualified.



VIKING REFRIGERATOR /02

VCCF236

The French-door model opens wide to reveal features like an adjustable Cold Zone™ drawer and internal filtered water dispensing. Tri-level slide-out freezer baskets include a separate ice drawer with scoop. ENERGY STAR® qualified.



VIKING ELECTRIC OVEN /03

RVDOE330SS

The main features of Viking RVDOE330 include 10-pass broiler with Heat Reflector Go with wide range of settings, convection system with 2 speeds, digital clock/timer, meat probe, and TruGlide oven racks. Durable metal cast-iron control knobs allow easy operations.



VIKING 36" COOKTOP /04

RVGC336-5 BSS

The stylish 5 burner continuous grate cooktops allow easy movement of cookware. The cooktops feature a one-piece steel top, providing elegant curves and a seamless, easy-to-clean surface.





PANOPTIC

GROUP

Standard Appliances

The kitchen is one of the most used spaces in a home. It's important for this space to function as well as it looks, which is why we include Viking appliances as a standard on our homes. Viking is known for having a high quality product, but what a lot of people don't know is that most of their lines are ENERGY STAR rated, and have a much lower energy requirement than most other appliances. It's a win-win situation of our homeowners. You get the high-quality appliances that actually contribute to the efficiency of your home and give you LEED points.



Scan For More Information

VIKING MICROWAVE /01

RVM320SS

The Viking microwave provides an array of powerful settings. In addition to an extra-large capacity, it also offers exceptional features like Keep Warm Plus and sensor cooking.



BEST OVEN HOOD /02

U10236SBIZ

36" Custom Hood Insert with 500 CFM Internal Blower, 4 Speed Push Button Control, 2 Halogen Lamps and Stainless Steel Mesh Filters: Stainless Steel



SAMSUNG WASHER /03

WF42H5000WH

4.2 Cu Ft Capacity. Fit More Laundry, Do Fewer Loads/ VRT Technology Reduces Noise And Vibration To An Incredibly Low-Level/ Self Clean+ Keeps Washer Tub Fresh And Clean Without Additives/ Diamond Drum Extends Clothing Life By Treating Fabrics Gently/ White Finish



SAMSUNG DRYER /04

DV42H5000GW

Properly dry your laundry with this 7.5 cu. ft. Samsung DV42H5000GW gas dryer, which features a sensor-drying system that measures the amount of moisture in loads and then adjusts the drying times to ensure your clothes are thoroughly dried.





PANOPTIC GROUP

Mechanical Systems

The mechanical systems of a home is one of the most important aspects to consider when attempting to reduce the cost of utilities, and improve comfort, air quality, and efficiency. Our homes come standard with a completely custom-engineered HVAC system that perfectly matches the square footage and heating and cooling needs of the home. In addition to high-efficiency, we also greatly improve the air quality by incorporating UV bacterial filtration and medical grade air filters. When this is coupled with smart home automation, it gives the homeowner the ability to monitor the efficiency of the home, and adjust their habits to reduce cost and improve efficiency.



Scan For More Information

PLUMBING /01

The basement floor of this home is pre-piped for radiant heating in the floors (radiant heating unit sold separately). The plumbing system includes a 8GMP tankless water heater, sump pump, and ejector pump with monitor.



ELECTRICAL /02

The Electrical is wired for new, 200 amp service as per code. All decks on the home are wired with an electrical outlet and exterior lighting. The home is hard-wired for fire and carbon-monoxide detectors as well as pre-wiring for a speaker system.

Each floor is wired as follows:

1st Floor: Living room-7 points
dining room-2 points
back deck-2 points.

2nd floor: Each bedroom-2 points, Master bath-2 points
Hall bath-2 points

Lower Level: Recreation room-7 points
Bedroom-2 points



HVAC /03

We custom engineer every HVAC for our homes. These systems include the following:

Energy Recovery Ventilation (ERV)
95% efficient, 45k BTU, dual stage furnace
12 mil electric filter and UV lamp coil
Rheem A.C. 2 ton





PANOPTIC

GROUP

Plumbing Fixtures

The standard plumbing fixtures in our homes are thoughtfully designed and picked to add character and comfort into any space. Our experienced designer, Ingrid Baltasi, incorporates our standard fixtures into the space flawlessly by matching tile, paint, countertops, and vanities with the styles of our fixtures.

In addition to style, our standard fixtures also have properties that contribute to LEED points for your home. From our dual flush low flow toilets, to water-saving faucets, these plumbing fixtures will reduce the overall water consumption by up to 50%.



Scan For More Information

SHOWER PANEL /01

Our standard model shower panel includes body sprayers and an overhead shower in a bold, contemporary design.



BATHROOM SINK /02

Our bathrooms feature a contemporary ceramic undermount sink with chrome finishes.



SHOWERHEAD /03

We install a 16" stainless steel rain-fall showerhead in our bathroom ceilings.



TOILET /04

Featuring our one-piece, high-efficiency dual flush toilet. This toilet is consistent with the water savings standards of LEED Certification, and will save money on overall water bills.



FAUCET /05

Our bathroom faucets are all chrome finished, contemporary, low flow faucets.





PANOPTIC

GROUP

Powder Room Gold Package

The Gold Package for our Powder Rooms include beautiful fixtures and finishes from Grohe and Mirabelle. It includes finishes of polished chrome contrasting the white from the sink and toilet.

The selected finishes in our Gold Package are chosen by our experienced interior designer and will add a bold and contemporary styling to your space.



Scan For More Information

GROHE FAUCET /01

G21027000

2.2 GPM Center Set Lav Faucet High
Spout Less
Polished Chrome



MIRABELLE SINK /02

MIR32198AWH

Console Bathroom Sink
White Finish



SINK PEDESTAL /03

MIR3219RSS

Console for large square lavatory
Stainless Steel
Adjustable Leg Levelers



DUAL FLUSH TOILET /04

TCST412MF01

Aquia Close Coupled Toilet
Dual-max flushing system
Cotton





PANOPTIC

GROUP

Powder Room Platinum Package

The Platinum Package in our Powder Room includes a Kohler faucet, Mirabelle sink and pedestal, and water saving dual flush toilet.

The selected finishes in our Platinum Package are chosen by our experienced interior designer and will add a bold and contemporary styling to your space.



Scan For More Information

KOHLER FAUCET /01

K1466-4-CP

Loure Widespread Lavatory Faucet
Polished Chrome
3-7/8" Spout Reach
2.2 GPF



MIRABELLE SINK /02

MIR32198AWH

Console Bathroom Sink
White Finish



SINK PEDESTAL /03

MIR3219RSS

Console for large square lavatory
Stainless Steel
Adjustable Leg Levelers



DUAL FLUSH TOILET /04

TCST412MF01

Aquia Close Coupled Toilet
Dual-max flushing system
Cotton Finish





PANOPTIC

GROUP

Basement Bathroom Gold Package

Our Basement Bathroom Gold Package includes Kohler fixtures and trim in a polished chrome finish. The package includes upgrades to the faucet, shower and sprayer, and all of the trim.

The selected finishes in our Gold Package are chosen by our experienced interior designer and will add a bold and contemporary styling to your space.



Scan For More Information

HANSGROHE FAUCET /01

H31080001

Metris 101 Single-Hole
Chrome
4-5/8" Spout Reach



SHOWER HEAD /02

H26465001

Croma 220 Showerhead
Chrome
9" Spray Face



HAND SHOWER /03

H04266000

HG Unica S Wallba Set
Hand Sprayer
Chrome Finish



DUAL FLUSH TOILET /04

TCST412MF01

Aquia Close Coupled Toilet
Dual-max flushing system
Cotton





PANOPTIC

GROUP

Basement Bathroom Platinum Package

Our Basement Bathroom Platinum Package includes Kohler fixtures and trim in a polished chrome finish. The package includes upgrades to the faucet, shower and sprayer, and all of the trim.

The selected finishes in our Platinum Package are chosen by our experienced interior designer and will add a bold and contemporary styling to your space.



Scan For More Information

KOHLER FAUCET /01

K8990-7-CP

Toobi Lavatory Faucet
Polished Chrome
Coordinates with Toobi Accessories



KOHLER SHOWER /02

K13689-CP

Contemporary Round Rain Shower Head
Chrome
10" Low profile Design
Katalst Spray
2.5 GPM



HAND SHOWER /03

K9059-CP

Stillness Purist Contemporary
Handshower Kit
Polished Chrome



DUAL FLUSH TOILET /04

TCST412MF01

Aquia Close Coupled Toilet
Dual-max flushing system
Cotton





PANOPTIC

GROUP

Hallway Bathroom Silver Package

Our Hall Bathroom Silver Package includes finishes from Hansgrohe, including an updated faucet, rainfall showerhead, hand-held shower sprayer, and Mirabelle bathtub. All the trim in this package is also Hansgrohe with pristine chrome finishes.

The selected finishes in our Silver Package are selected by our experienced interior designer and will add a bold and contemporary styling to your space.



Scan For More Information

HANSGROHE FAUCET /01

H31080001

Metris 101 Single-Hole
Chrome
4-5/8" Spout Reach



SHOWER HEAD /02

H26465001

Croma 220 Showerhead
Chrome
9" Spray Face



UNICA SHOWER /03

H04266000

HG Unica S Wallba Set
Hand Sprayer
Chrome Finish



MIRABELLE TUB /04

MIREDS6030LWH

Edenton Collection Skirted
Soaker
White
W: 59-3/4" H: 29-3/4"
20" Deep



DUAL FLUSH TOILET /05

TCST412MF01

Aquia Close Coupled Toilet
Dual-max flushing system
Cotton





PANOPTIC

GROUP

Hallway Bathroom Gold Package

Our Hall Bathroom Gold Package includes fixtures from Kohler in a beautiful chrome finish. All of the fixtures and trim in this package are finished in a polished chrome. The package includes a Kohler faucet, rainfall showerhead, hand shower sprayer, and bathtub.

The selected finishes in our Gold Package are selected by our experienced interior designer and will add a bold and contemporary styling to your space.



Scan For More Information

KOLHER FAUCET /01

K8990-7-CP

Toobi Lavatory Faucet
Polished Chrome
Coordinates with Toobi Accesories



SHOWER HEAD /02

K13689-CP

Contemporary Round Rain
Shower Head
Chrome
10" Low profile Design
Katalst Spray
2.5 GPM



HAND SHOWER /03

K9059-CP

Stillness Purist Contemporary
Handshower Kit
Polished Chrome



SHOWER TRIM /04

KT8981-4-CP

Toobi Valve Trim
Polished Chrome



MIRABELLE BATH /05

MIREDS6030LWH

Edenton Collection Skirted Soaker
White
W: 59-3/4" H: 29-3/4"
20" Deep





PANOPTIC

GROUP

Hallway Bathroom Platinum Package

Our Hallway Bathroom Platinum Package includes Kohler fixtures in a gorgeous brushed nickel finish. This package includes the Kohler Stillness Faucet, large rainfall showerhead, hand shower sprayer, and large Kohler bathtub. All of the trim is finished in the same brushed nickel as the fixtures, and is provided by Kohler.

The selected finishes in our Platinum Package are chosen by our experienced interior designer and will add a bold and contemporary styling to your space.



Scan For More Information

KOLHER FAUCET /01

K8990-7-BN

Toobi Tall Single Lavatory Faucet
Polished Chrome
1.5 GPM
1 Hole Installaion



SHOWER HEAD /02

K13689-BN

10" Contemporary Round Rain
Shower head
Brushed Nickel
Master Clean Spray Face
78 Nozzles
2.5 GPM



HAND SHOWER /03

K9059-BN

Stillness/Purist Handshower Kit
Brushed Nickel
60" Hose



SHOWER TRIM /04

KT8981-4-BN

Toobi Valve Trim
Brushed Nickel



MIRABELLE TUB /05

MIREDS6030LWH

Edenton Collection Skirted Soaker
White
W: 59-3/4" H: 29-3/4"
20" Deep





PANOPTIC

GROUP

Master Bathroom Silver Package

Our Master Bathroom Silver Package includes finishes from Hansgrohe, including and updated faucet, rainfall showerhead, hand-held shower sprayer, and Kohler bathtub. All the trim in this package is also Hansgrohe with pristine chrome finishes.

The selected finishes in our Silver Package are selected by our experienced interior designer and will add a bold and contemporary styling to your space.



Scan For More Information

HANSGROHE FAUCET /01

Hansgrohe H31080001

Metris 101 Single-Hole Faucet
Chrome
4-5/8" Spout Reach



SHOWERHEAD /02

Hansgrohe H27474001

Downpour Air 10" Rainfall
Showerhead in polished chrome



HAND SHOWER /03

Hansgrohe H04266000

HG Unica S Wallba Shower
Polished Chrome Finish



BATHTUB /04

Kohler K1835-G-0

Underscore Drop-in
Bubble Massage Air Bath
White Finish
72" X 23" X 36"



TRIM PACKAGE /05

Hansgrohe H04233000

S Pressure Balance Trim. Chrome

Hansgrohe H04230000

S Thermostat Trim. Chrome

Hansgrohe H31494001

Metris E Tub Spout. Chrome

Hansgrohe H28466001

Bodyvette Bodysprayer. Chrome





PANOPTIC

GROUP

Master Bathroom Gold Package

Our Master Bathroom Gold Package includes fixtures from Kohler in a beautiful chrome finish. All of the fixtures and trim in this package are finished in a polished chrome. The package includes a Kohler faucet, rainfall showerhead, hand shower sprayer, and bathtub.

The selected finishes in our Gold Package are selected by our experienced interior designer and will add a bold and contemporary styling to your space.



Scan For More Information

KOHLER FAUCET /01

Kohler K942-4-CP

Stillness Widespread Bathroom Sink
Chrome Finish
7-1/4"



SHOWERHEAD /02

Kohler K13690-CP

12" Rainhead Shower
Polished Chrome
2.5 GPM



HAND SHOWER /03

Kohler K9059-CP

Stillness Purist Handshower
Polished Chrome



BATHTUB /04

Kohler K1835-G-0

Underscore Drop-in
Bubble Massage Air Bath
White Finish
72" X 23" X 36"



TRIM PACKAGE /05

Kohler K8003-CP

WaterTile 22 Bodyspray

Kohler KT10944-4-CP

Thermostatic Faucet Trim. Chrome

Kohler KT955-4-CP

Stillness Valve Trim. Polished Chrome

Kohler KT950-4-CP

Stillness Valve Trim. Chrome





PANOPTIC GROUP

Master Bathroom Platinum Package

Our Master Bathroom Platinum Package includes Kohler fixtures in a gorgeous brushed nickel finish. This package includes the Kohler Stillness Faucet, large rainfall showerhead, hand shower sprayer, and large Kohler bathrubs. All of the trim is finished in the same brushed nickel as the fixtures, and is provided by Kohler.

The selected finishes in our Platinum Package are chosen by our experienced interior designer and will add a bold and contemporary styling to your space.



Scan For More Information

KOHLER FAUCET /01

Kohler K942-4-BN

Stillness Widespread Bathroom Sink
Brushed Nickel
3-7/8" Spout Reach



SHOWERHEAD /02

K13690-BN

12" Rainhead Shower
Brushed Nickel
2.5 GPM



HAND SHOWER /03

Kohler K9059-BN

Stillness Purist Handshower
Brushed Nickel



BATHTUB /04

Kohler K1835-G-0

Underscore Drop-in
Bubble Massage Air Bath
White Finish
72" X 23" X 36"



TRIM PACKAGE /05

Kohler K8003-BN

WaterTile 22 Bodyspray

Kohler KT10944-4-BN

Thermostatic Faucet Trim.

Chrome

Kohler KT955-4-BN

Stillness Valve Trim. Polished

Chrome

Kohler KT950-4-BN

Stillness Valve Trim. Chrome.

